

# Member Open House Highlights

## Go Behind-the-Scenes

Offices – Offices 2B, access via Silver Elevators on Lower Level  
Collections – Lower Level, hallway before the U-505 Submarine entrance

LEGOLAND® Activity Stations  
Lower Level, Materials Science  
Main Level, Transportation Gallery  
Main Level, Rosenwald Court

## LEGOLAND® Activity Stations

Lower Level, Materials Science  
Main Level, Transportation Gallery  
Main Level, Rosenwald Court

## CircEsteem

Main Level, Rotunda

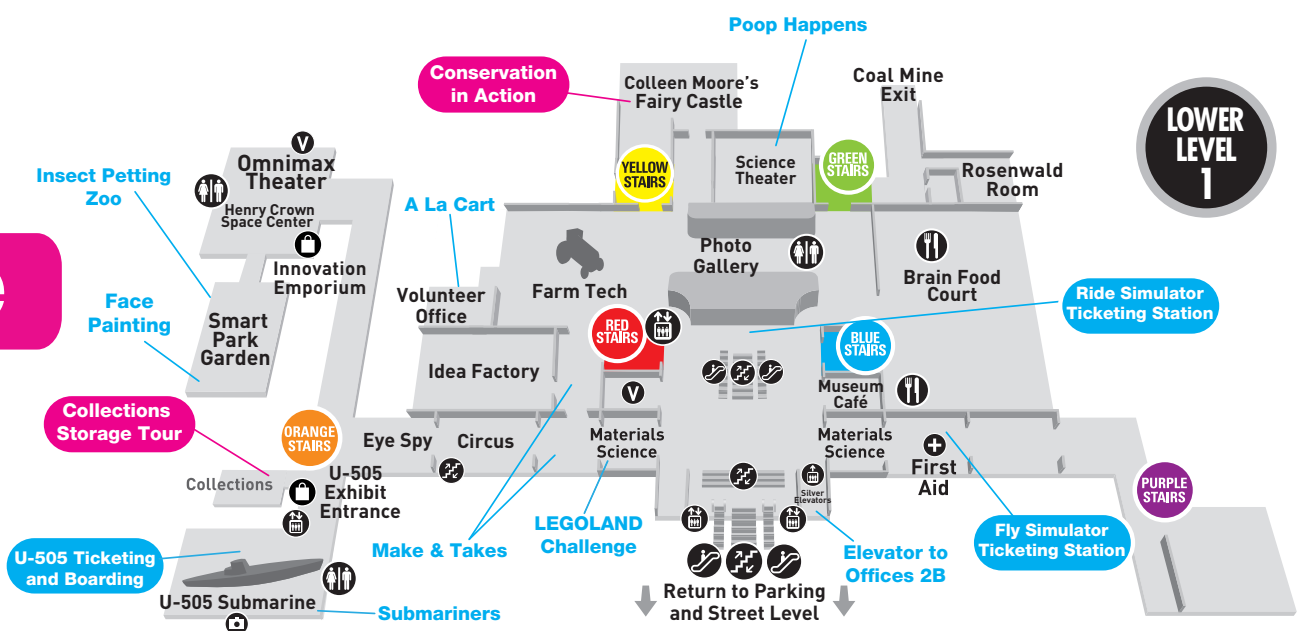
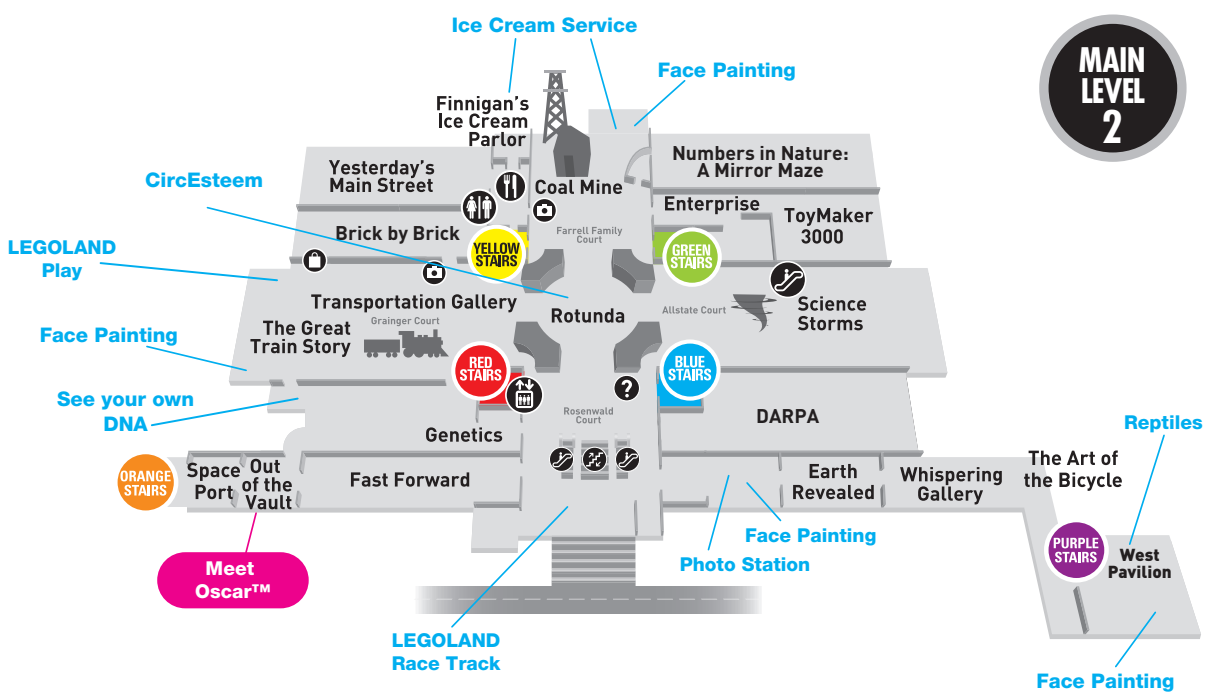
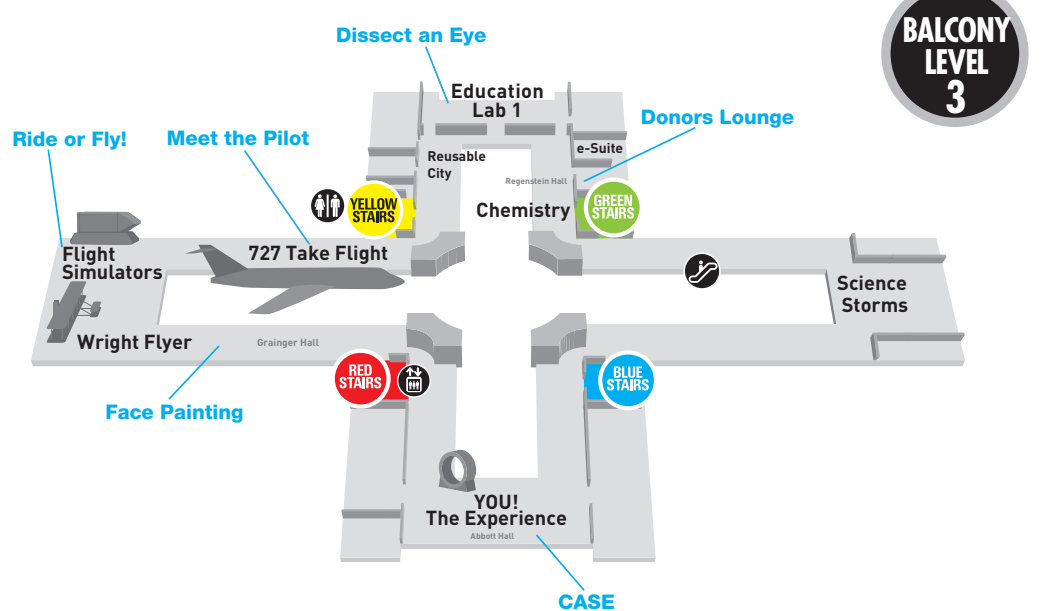
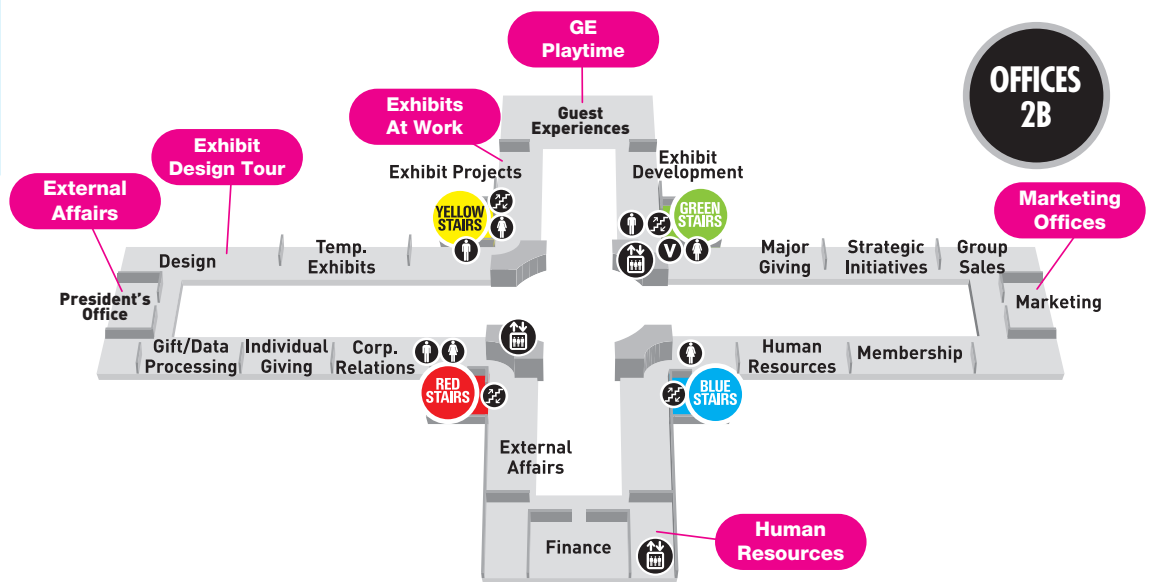
## Insect Petting Zoo

Lower Level, Smart Park Garden

## Ice Cream Service

Main Level, Finnigan's Ice Cream Parlor and South Portico (outdoors)

Presented by:



member open house

5:30 to 9 p.m.



# Member Open House 2016

July 20, 2016, 5:30 to 9 p.m.

## LIVE SCIENCE EXPERIENCES

### Make & Take: Bouncing Bird

Give it a shake and watch the bird bounce, and it all works by science.

Lower Level: By Circus entrance. 5:30 to 8:30 p.m.

### Make & Take: Colorful Suncatcher

Create your own unique window decoration with polarizing filters and tape.

Lower Level: Outside Idea Factory. 5:30 to 8:30 p.m.

### A La Cart

Touch, feel and play with select artifacts from our Collection. Learn about what they are, where they came from and how they work.

Lower Level: Volunteer Office. 5:30 to 8:30 p.m.

### Submariners

Hear first-hand stories of life on board a submarine from real U.S. sailors and naval veterans.

Lower Level: *U-505 Submarine*. 5:30 to 8:30 p.m.

### Science Connections

Connect to the exciting world of science that surrounds us with fun, hands-on activities.

Main Level: Rosenwald Court. 5:30 to 8:30 p.m.

### Slime Science

Use polymers found at home to make slime...the gooier, the better!

Main Level: Rosenwald Court. 6:30 to 8:30 p.m.

### Meet the Pilot

What does it take to fly a plane? Meet one of our United Airline pilot volunteers and learn about the science of flight.

Balcony Level: *United Airlines 727*. 5:30 to 8:30 p.m.

### See Your Own DNA

Learn about DNA, and discover what makes each of us unique.

Main Level: Genetics. 5:45 p.m., 6:30 p.m., 7:15 p.m., 8 p.m., 8:45 p.m.

### Dissect an Eye at MSI

Dissect your own cow eye in this in-sight-ful experience! Space is limited to the first 25 members (age 10+ to use a scalpel).

Balcony Level: Lab 1. 7 p.m. and 8 p.m.

### Poop Happens

Learn about the digestion process in this funny and engaging play. Space is limited to the first 65 members.

Lower Level: Science Theater. 6:30 p.m. and 7:30 p.m.

## GO BEHIND-THE-SCENES

Peek behind the curtain and find out what it takes to run the largest science museum in the Western Hemisphere. To access the Offices 2B Level, use the Silver Elevators on the Lower Level, near the Museum Café.

### Collections Storage Tour

Go behind the scenes for a glimpse of the storage areas where our staff and volunteers will show you highlights of our Collection. Lower Level: Access via the *U-505 Submarine* entrance. 5:30 to 8 p.m.

### Out of the Vault

Creating an Oscar™ is no simple task. Learn exactly how the iconic statuettes were made in Chicago, step by step.

Main Level: *Out of the Vault*. 5:30 to 8 p.m.

### We Are MSI

Visit Human Resources and learn more about the fun, dedicated people who work at MSI. More than 400 strong, we're an eclectic bunch—with scientists, world travelers and entertainers among us—who all share a passion for inspiring the inventive genius in everyone. Offices 2B: Use the Silver Elevators. 5:30 to 8 p.m.

### Inside the President's Office

Meet the External Affairs team in the office of MSI President and CEO, David R. Mosena. Learn about ways to support MSI, get the inside scoop on upcoming events and leave a note for the President.

Offices 2B: Use the Silver Elevators. 5:30 to 8 p.m.

### Exhibit Design Tour

Meet some of the creative people behind MSI's world-class exhibits. Learn the ins-and-outs of the collaborative design process and how the team transforms Museum spaces.

Offices 2B: Use the Silver Elevators. 5:30 to 8 p.m.

### Marketing Offices

Tour the Marketing division and learn how we support the Museum and our Center for the Advancement of Science Education (CASE) with award-winning marketing, advertising, digital projects and public relations.

Offices 2B: Use the Silver Elevators. 5:30 to 8 p.m.

## Member Discounts

For one night only, members receive a double discount - 20% off - on all store purchases! The Museum store in the Entry Hall is open from 4 to 9:30 p.m. All other stores, *Brick by Brick*, Innovation Emporium and *U-505*, are open from 5:30 to 9:30 p.m. Members also receive a 10% discount on all food purchases in the Brain Food Court and Café on the Main Level (open until 8:30 p.m.).

Visit our FREE Member Open House Photo Station near Earth Revealed (Main Level).

## Exhibits at Work

Meet the Science Exhibitions & Partnerships team and discover what ideas are in the works for upcoming exhibits and experiences!

Offices 2B: Use the Silver Elevators. 5:30 to 8 p.m.

## GE Playtime

Join the Guest Experiences team for a fun night of improv games! Participate in exercises that are used in hiring, training, and meetings to build teams and help us provide world-class guest experiences.

Offices 2B: Use the Silver Elevators. 5:30 to 8 p.m.

## Conservation In Action

See the science of conservation as conservators clean and stabilize the historic ship model collection in preparation for our new and exciting Ship Gallery!

Lower Level: Fairy Castle Annex. 5:30 to 8 p.m.

## PERMANENT EXHIBITS

### The Idea Factory

Children can experiment and test their own theories about basic scientific principles. For children 10 and under, accompanied by a parent, guardian or chaperone. No tickets required.

Lower Level. 5:30 to 9 p.m.

### Pioneer Zephyr

All aboard America's first diesel-electric, streamlined passenger train! Take a 20 minute guided tour and go back in time to travel on the Zephyr on the day of its landmark trip!

Entry Hall: 4 to 7 p.m.

### U-505 Submarine Exhibit

The world-famous *U-505* is the centerpiece of an unforgettable exhibit. Experience the Battle of the Atlantic, the *U-505*'s dramatic capture and more.

No tickets required.

Lower Level: *U-505 Submarine*. 5:30 to 9 p.m.

### U-505 Submarine Boarding

Step into history! Set foot in the actual *U-505* submarine that was captured in WW II with our facilitators. Space is limited. Visit the ticketing station at the sub entrance for complimentary, first come, first served, timed entry tickets.

Lower Level: *U-505 Submarine*. 5:45 to 9 p.m., last entry at 8:30 p.m.

### The Great Train Story

Witness more than 20 trains running on 1,400 feet of winding track from Seattle to Chicago. Learn lots of fun facts and railroad science from our volunteer team of train lovers (until 8:30 p.m. only). No tickets required.

Main Level: Transportation Gallery in Grainger Court. 5:30 to 9 p.m.

### Science Storms

Explore the extraordinary science behind some of nature's most powerful and compelling phenomena—tornados, lightning, fire, tsunamis, sunlight, avalanches and atoms in motion. No tickets required.

Main Level: Allstate Court. 5:30 to 9 p.m.

### YOU! The Experience

See yourself in new and fascinating ways as you experiment with more than 50 fun interactive experiences. No tickets required.

Balcony Level: Abbott Hall. 5:30 to 9 p.m.

### Coal Mine Tour - Sold Out

Journey to the bottom of a mine shaft, ride an underground train, learn about the U.S. mining industry and the evolution of mining technology. Ticket holders: bring (or show on your mobile device) the email confirmation you received from MSI.

Main Level: Farrell Family Court. 6 to 9 p.m., last entry at 8:30 p.m.

### Numbers In Nature: A Mirror Maze - Sold Out

Navigate through a giant mirror maze and discover the amazing numerical patterns that exist throughout the natural world. Ticket holders: bring (or show on your mobile device) the email confirmation you received from MSI.

Main Level: Farrell Family Court. 5:30 to 9 p.m., last entry at 8:30 p.m.

## Summer Brain Games

Keep the fun of the Member Open House going at home! Sign up for Summer Brain Games, our weekly series of family friendly, at-home experiments designed to combat kids' "summer brain drain." Take off on a voyage of exploration with hands-on activities related to the theme of travel.

Learn more at [msichicago.org/summerbrain](http://msichicago.org/summerbrain)

# Guide to Activities

## CASE

The Center for the Advancement of Science Education (CASE) engages youth and all those who are essential to their success, including their families, teachers, schools and communities, in high quality STEM education opportunities. CASE staff will be on hand to provide an overview of programs with examples of curriculum and materials.

Balcony Level: YOU! Lab. 5:30 to 8:30 p.m.

## SPECIAL EXHIBIT AND OMNIMAX®

### Brick By Brick - Sold Out

Explore the power of play with giant-LEGO®-built structures and interactive building challenges. Learn how architects and engineers push the limits of design, materials and location to make the seemingly impossible, possible. Ticket holders: bring (or show on your mobile device) the email confirmation you received from MSI.

Main Level. 5:30 to 9 p.m., last entry at 8 p.m.

### Island of Lemurs: Madagascar - Sold Out

Go on a spectacular journey to the remote world of Madagascar and join trailblazing scientist Patricia Wright on her lifelong mission to help the endangered Lemurs. Ticket holders: bring (or show on your mobile device) the email confirmation you received from MSI.

Lower Level: Omnimax® Theater. 6 and 8 p.m.

### Tornado Alley - Sold Out

Join Storm Chasers star Sean Casey and the researchers of VORTEX 2 on this heart-pounding science adventure. Ticket holders: bring (or show on your mobile device) the email confirmation you received from MSI.

Lower Level: Omnimax® Theater. 7 p.m.

## SWEET TREATS AND OTHER FUN

### Face Painting

Get your face painted in an out-of-this-world design. Locations: Various (see map). 5:30 to 8:30 p.m.

### Smart Park Garden - Outdoors!

Get up close and personal with crawly creatures at the Insect Petting Zoo and explore the Smart Park Garden with help from our master gardeners.

Lower Level: Smart Park Garden. 5:30 to 8:30 p.m.

### LEGOLAND at MSI

Get creative at interactive build stations courtesy of LEGOLAND® Discovery Center Chicago. Build and race a LEGO® derby car, create a masterpiece with LEGO® and DUPLO® bricks, and participate in a creative build challenge.

Locations: Various (see map). 5:30 to 8:30 p.m.

### CircEsteem

Visit CircEsteem's skill stations to try a circus skill, such as plate spinning, gym wheel or tight rope, and enjoy a special performance by CircEsteem students.

Main Level: Rotunda. Skill Stations: 5:30 to 7:30 p.m.

Performance: 7:45 p.m.

### Ice Cream Service

Enjoy our sweetest Member Open House tradition: complimentary ice cream. Meet MSI President David R. Mosena on the South Portico from 6 to 7 p.m.!

Main Level: Finnigan's Ice Cream Parlor and South Portico (outdoors), near the *Coal Mine*. 5:30 to 8:30 p.m.

### Coal Black Exotics - Reptiles

See reptiles up close and learn how to care for them.

Main Level: West Pavilion. 5:30 to 8:30 p.m.

### Ride or Fly!

Choose from two flight adventures. Complimentary, first come, first served, timed entry tickets are available. Space is limited.

**Fly:** Climb aboard one of the interactive flight simulators to test your piloting skills. Each flyer must weigh less than 245 lbs. and be at least 48" tall. For tickets, visit the Fly ticketing station on Lower Level, near First Aid. All Fly participants must be present to collect tickets.

**Ride:** Take an exciting virtual trip on board our ride simulator. For tickets, visit the Ride ticketing station on the Lower Level, next to Swiss Jolly Ball.

Balcony Level: Flight Simulator Gallery. 5:30 to 8:30 p.m.

Thank you to our generous sponsor!



## Donors Lounge

Annual Fund donors are invited to take a break from the Member Open House activities, grab a snack and beverage, play a quiz game and chat with MSI staff. Located in the Chemistry Hall on the Balcony Level, stop in to say hi from 6 to 8 p.m.! You may even go home with a prize.

Interested in becoming an Annual Fund member? Learn more at [msichicago.org/annualfund](http://msichicago.org/annualfund).